



# Zylaria®

**It's time to re-think relaxation & sleep quality**

## Tranquil, Quality Sleep

As night approaches, the body and mind naturally crave relaxation and a signal for rest. However, many individuals struggle to unwind due to various life factors. The brain relies on an important amino acid called gamma-aminobutyric acid (GABA) to facilitate precise communication between the brain and the body. Zylaria® works to support this GABA relaxation process, promoting a sense of calmness (*in-vitro*).\*

Zylaria® is a proprietary formulation of three highly purified botanical fractions, *Xylaria nigripes*, *Panax notoginseng*, and *Cuscuta chinensis*.

**Recommended Dosage:** 500mg



**NON-HABIT FORMING**



**100% PLANT-BASED**



**NPN HEALTH CANADA**

## Discover the Innovation of Calm & Restful Sleep

Consumers are looking for efficacious products that they can rely on. Today's consumer wants to relax and wind down at the end of the day — resulting in quality sleep. Zylaria® is here to support that desire

### PROMOTE RELAXATION

Experience a winding down, calming effect to prepare your body for rest



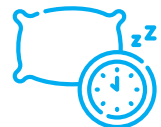
### ELEVATE MOOD

Increase a sense of well-being and vitality



### BENEFIT SLEEP LATENCY & QUALITY

The uptake of GABA to specific brain cell receptors demonstrated through preclinical *in-vitro* studies for a calming effect on the body



## The Path to Peaceful Sleep

Zylaria® can be applied in a variety of products such as:

- Sleep Formulas
- Calming & Mood Supporting Formulas
- General Wellness Formulas

### Legend

- Control
- Before Treatment
- Zylaria®
- After Treatment

\*These statements may not comply with your country's laws and regulations or with Reg. EC n. 1924/2006 and have not been evaluated by the Food and Drug Administration. The products are not intended to diagnose, treat, cure, or prevent any disease. Marketers of finished products containing this ingredient are responsible for ensuring compliance with the applicable legal framework.

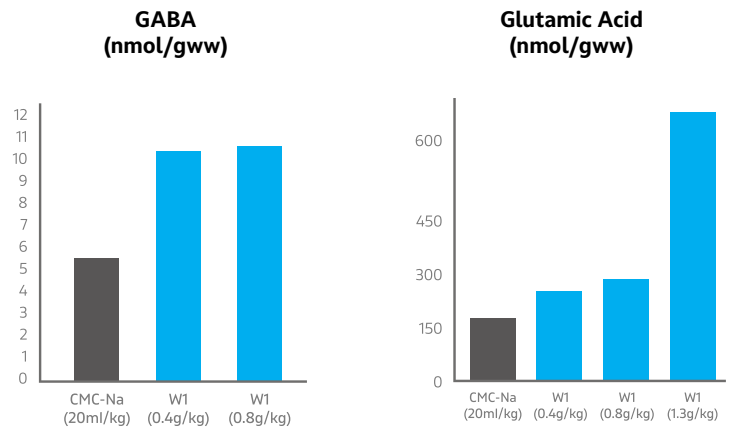
## Clinical Performance

Zylaria® has shown to promote relaxation and better sleep quality through preclinical *in-vitro*, *in-vivo*, and human studies.

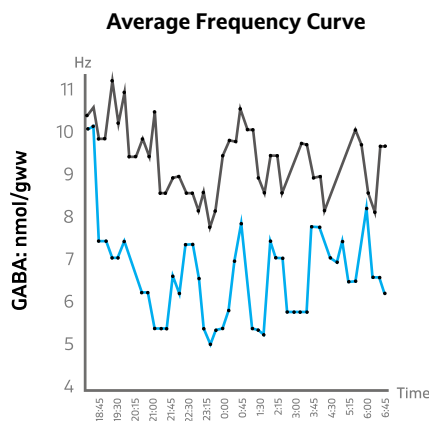
\*For full results and additional dosages, request the Zylaria® product dossier.

Request study references at [www.nulivscience.com/ingredients/zylaria](http://www.nulivscience.com/ingredients/zylaria)

**Effect of Zylaria® on the brain**, indicated by GABA and Glutamic Dehydrogenase uptake in mice.



**Effect of Zylaria® on the brain**, indicated by lowering brain wave activity that leads to improved quality of sleep through preclinical *in-vivo* studies.



**Effect of Zylaria® on GABA Transaminase (GABA-T) activity** in PC-12 cells.

